

Supplementary material for: Poyraz, Y., Ozcicek, E., Kavalci, Z., & Essiz, S. (2026). Dynamics of the C-terminal loop of the human STING structure in active and inactive conformations. The European chemistry and biotechnology journal, 3(1), Article e2026-001. <https://doi.org/10.62063/ecb-56>
Correspondence: Sebnem Essiz, Department of Bioinformatics and Genetics, Faculty of Engineering and Natural Sciences, Kadir Has University, Istanbul, Türkiye. Email: sebnem.gokhan@khas.edu.tr; Ph.: +90 (212) 5336532 – 1437.

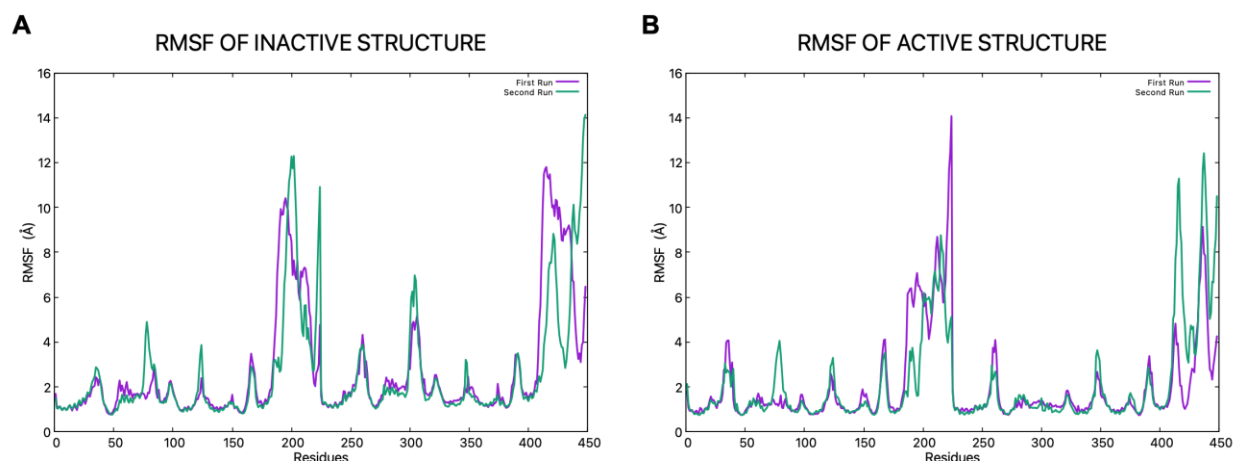


Figure S1: RMSF inactive (A) and active (B) structures comparing the first (purple) and second (green) runs.

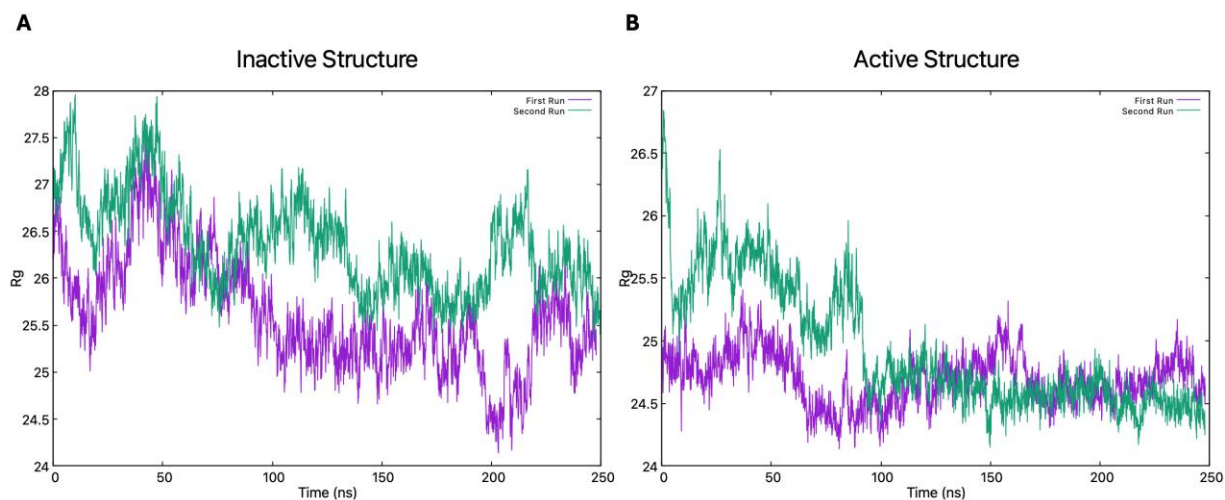


Figure S2: Radius of gyration (Rg) graphs of inactive (A) and active (B) structures comparing the first (purple) and second (green) runs.

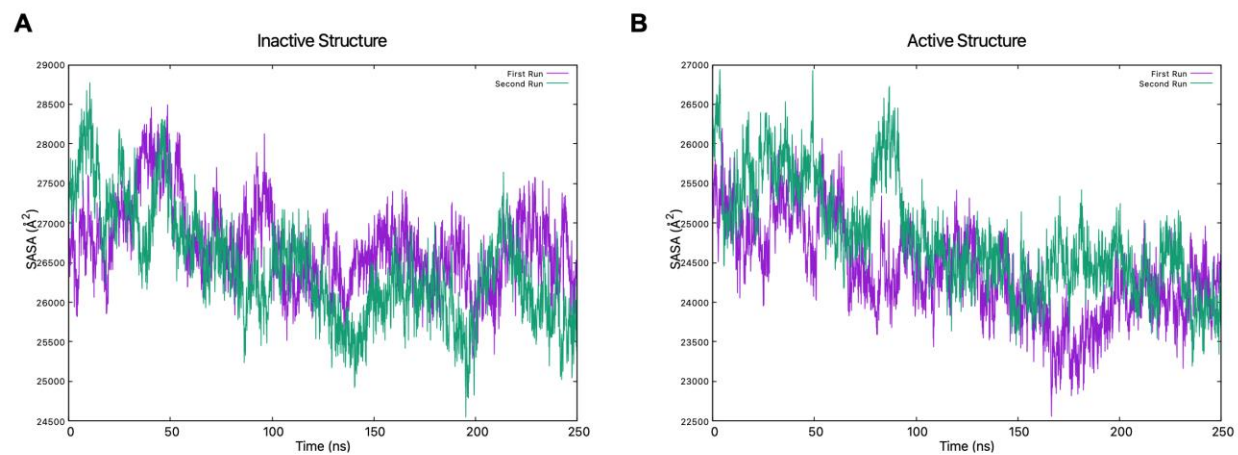


Figure S3: *Solvent-accessible surface area (SASA) graph of inactive (A) and active (B) structures comparing the first (purple) and second (green) runs.*

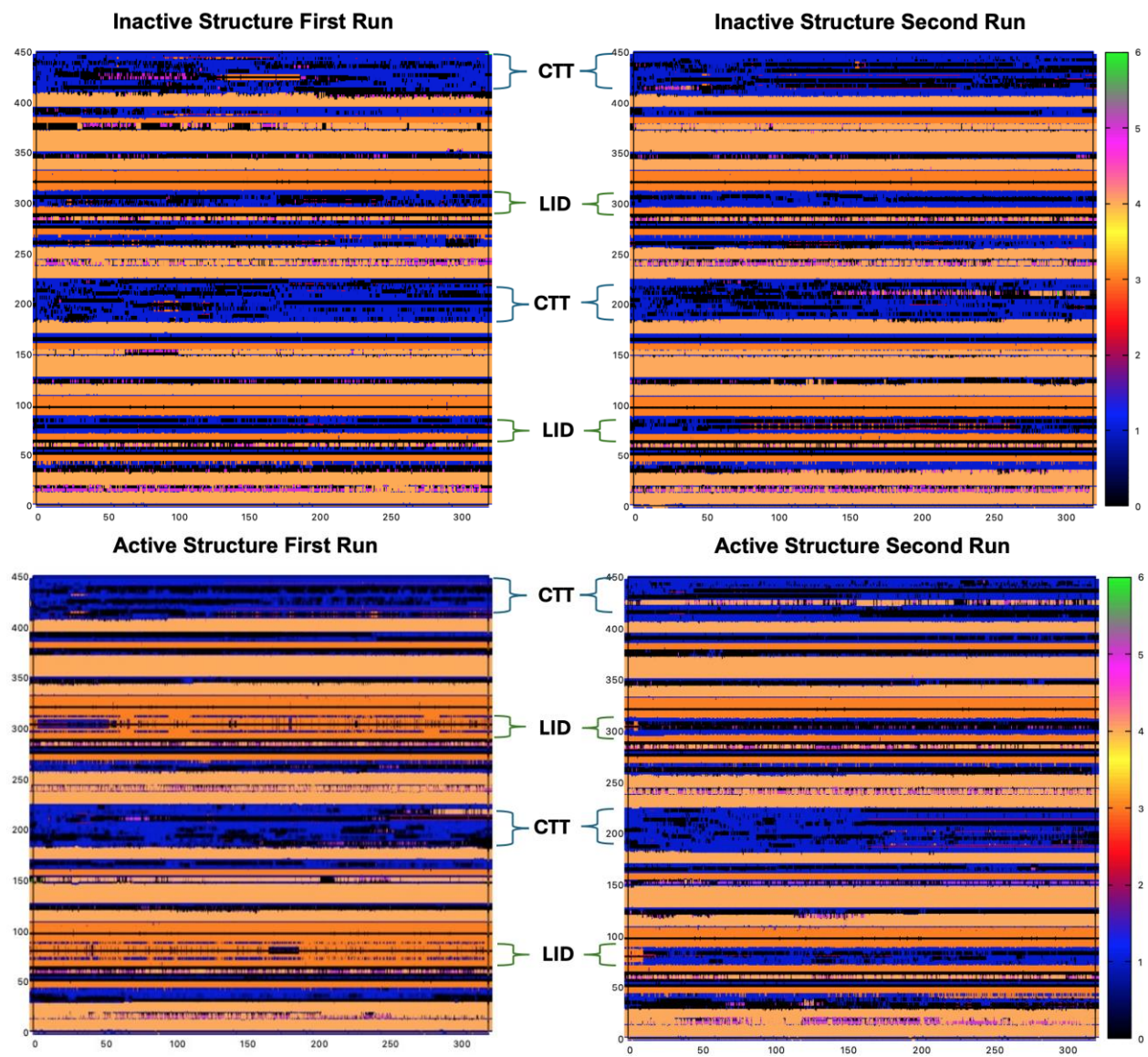


Figure S4: Secondary structure analysis of inactive and active structures for the first and second runs.